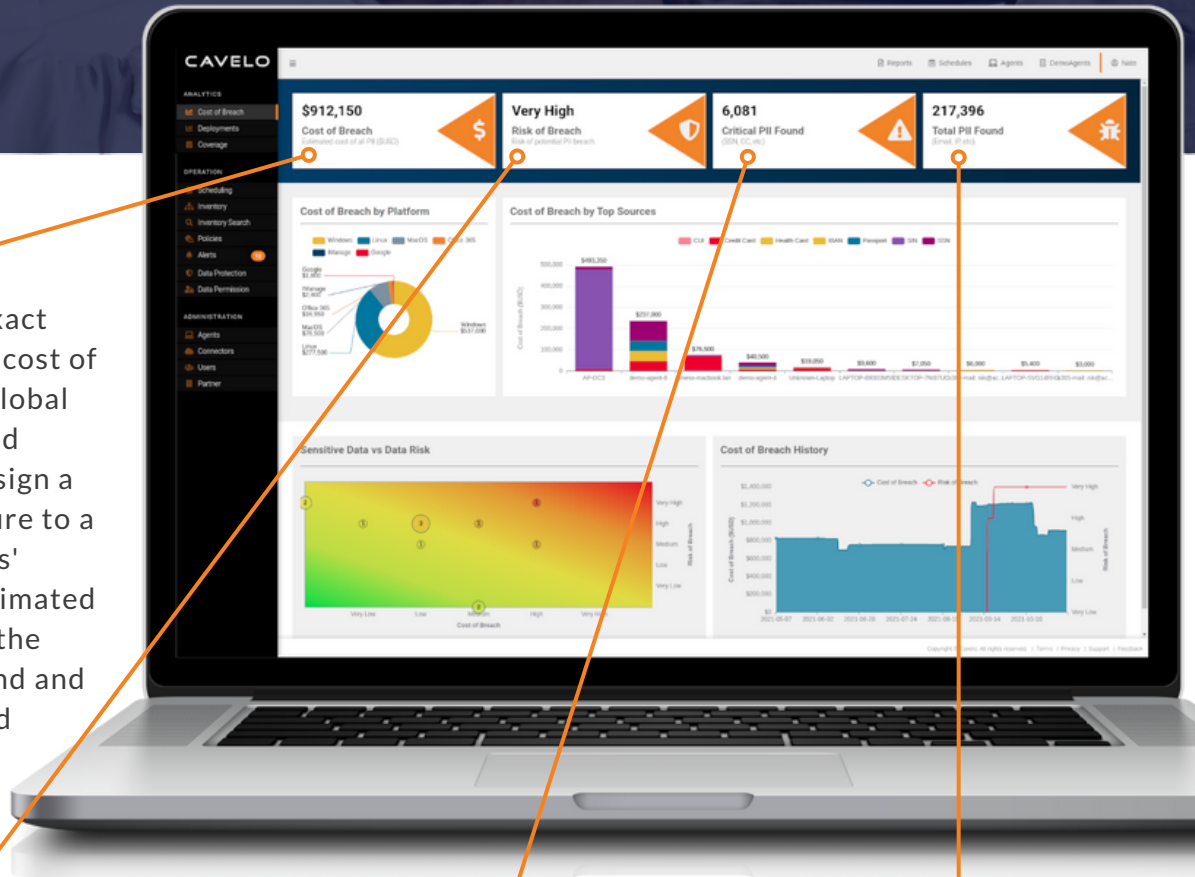




# Discover. Quantify. Prioritize.

## Auditors want to know... You should too!



### Cost of Breach

Although there is no exact science in determining cost of breach, this tool uses global statistics, standards and machine learning to assign a "dollars and cents" figure to a breach of your business' sensitive data. The estimated total is determined by the number of records found and average cost per record within your industry.

### Risk of Breach

This ranking is determined by accessibility of your sensitive data using the evolving NIST cybersecurity framework standards.

### Critical PII Found

This number of records highlights the most valuable personally identifiable information (PII) within your network for hacker exploit.

### Total PII Found

This number of records reflects an aggregate of all personally identifiable information (PII) housed or shared within your network.

Request a trial scan today!  
[omegapa.com/data-discovery-scan](http://omegapa.com/data-discovery-scan)  
610.678.7002

*Data is in constant motion (file transfer, save as, local downloads, emailed copies, and the like). Frequency of scans is important. Talk to a representative to determine the appropriate cadence to protect your business.*

*Every stakeholder has vested interest in ensuring data privacy within a business. From preventing data breaches and fines, to managing lawsuits and company reputation; data discovery, classification and management are essential to risk mitigation.*